

Approval subject to:-
 1. Strict compliance of sanctioned building plans without any deviation.
 2. Architectural drawings / building plans with respect to current building regulation / technical drawings / documents are considered as records for supporting the building permit.
 3. Responsibility of safety and safety liability to be born by the owner / Architect / Geotechnical Engineer / L.B.S / Structural Engineer.

4. Before commencement of any construction, it should be confirmed that the sanctioned building plan along with the conditions is in order with respect to the site measurement and necessary approval from the concerned authority, such as Building Rules 2017.
 5. Entire construction and the quality of work is solely the responsibility of the owner.
 6. Dumping of construction materials, mixing of mortar etc. on adjoining the road & land are not permitted.

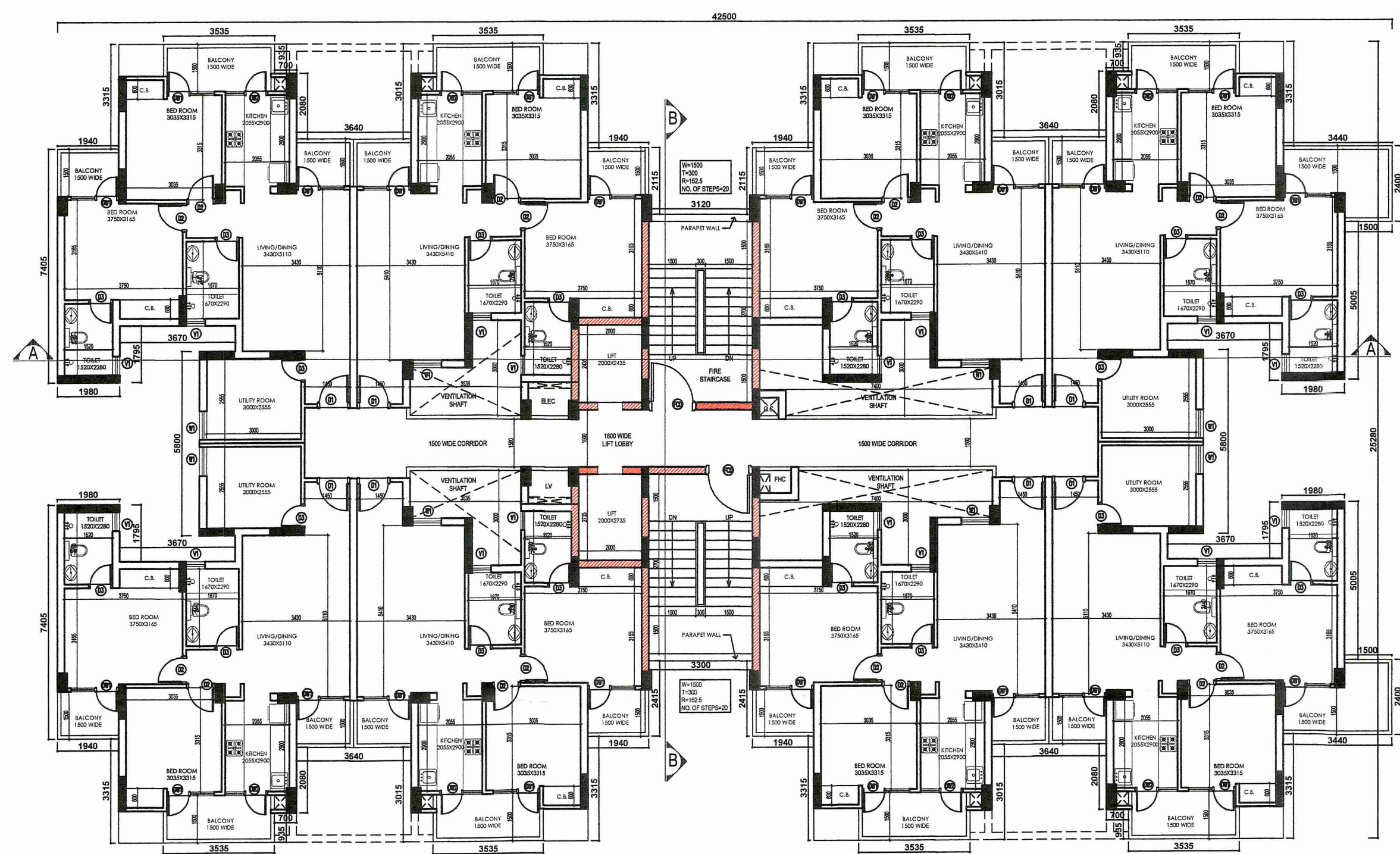
Any discrepancy between Completion Plan and Sanctioned Plan shall discontinue all the to occupancy certificate.

THE SANCTION IS VALID UP TO 09/11/2022

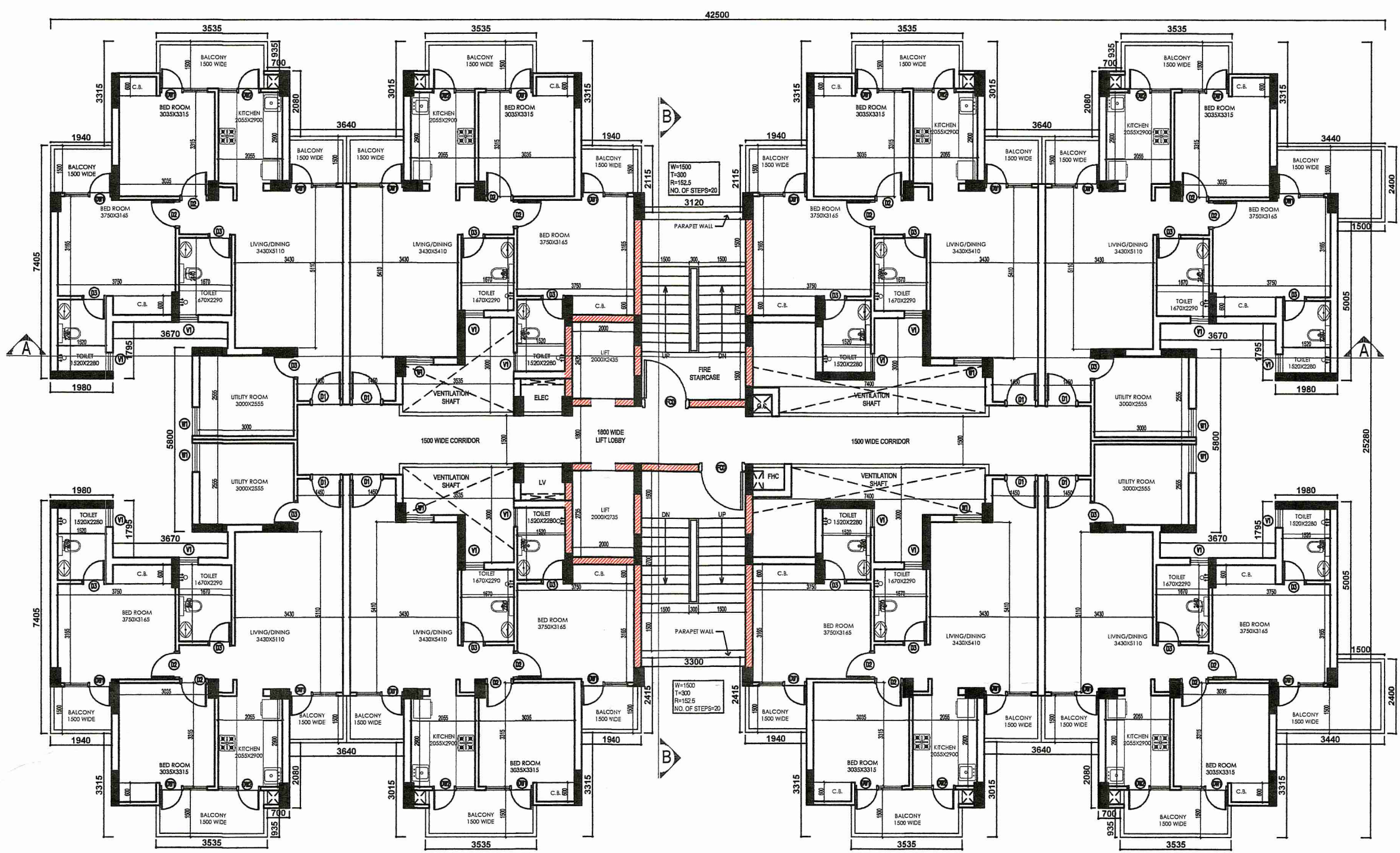
APPROVED AS PER

[Signature]
 09/11/2022

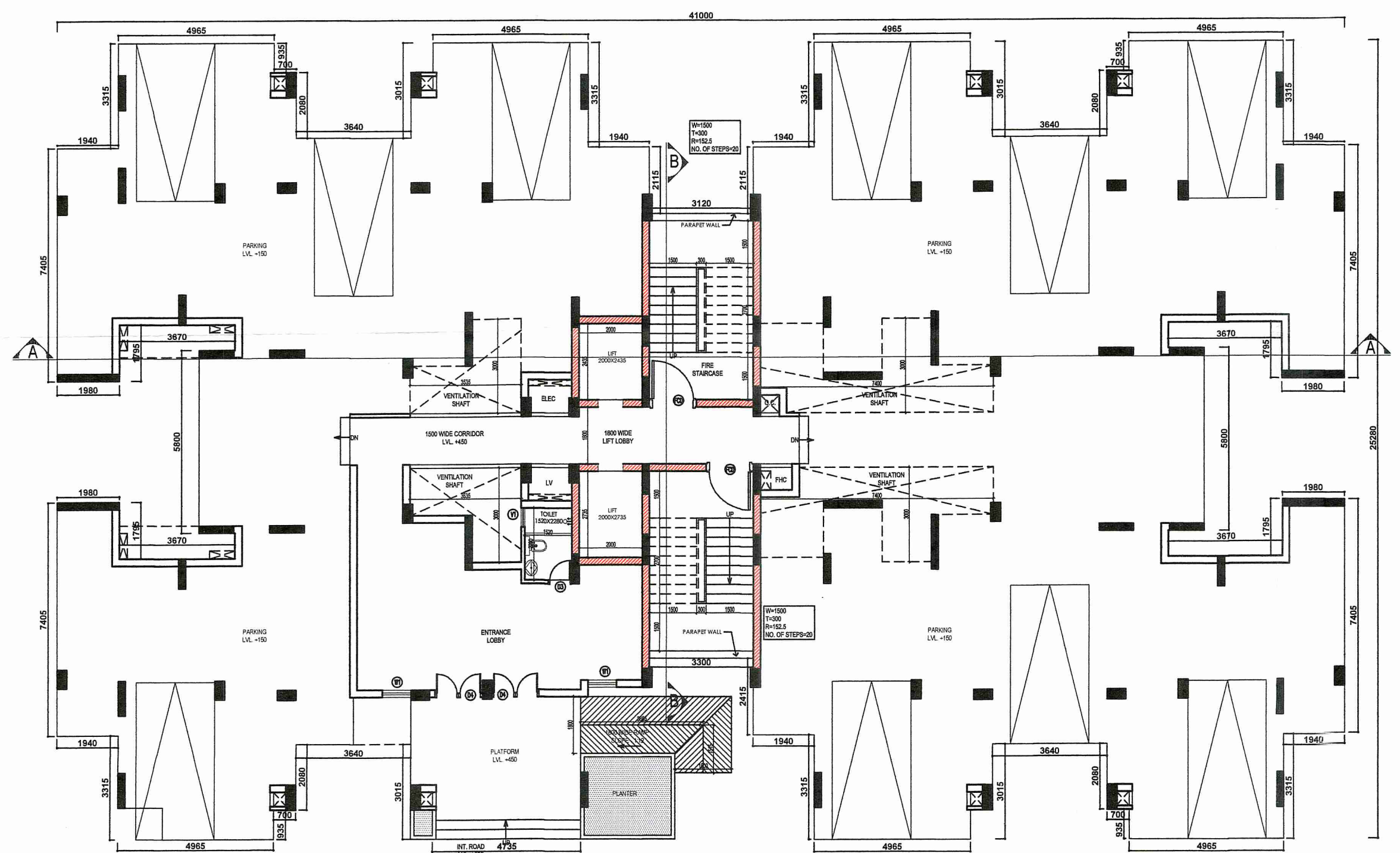
P. Kamalakanth, IFS
 Executive Director
 West Bengal Industrial Development Corporation Ltd.
 23, Abanindranath Tagore Sarani (Camao Street), Kolkata - 700 017



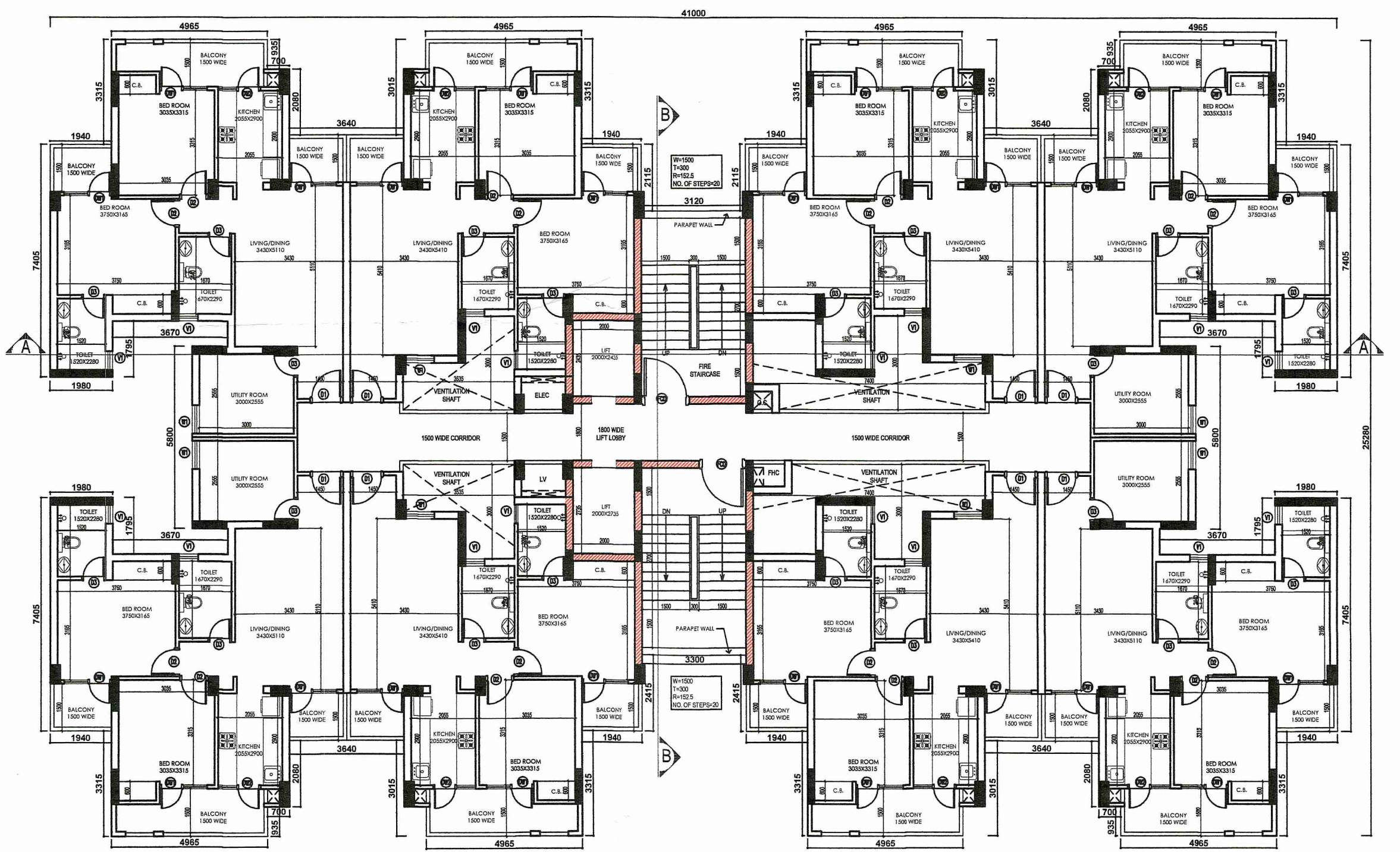
4TH FLOOR PLAN
 SCALE: 1:100



5TH FLOOR PLAN
 SCALE: 1:100



STILT FLOOR PLAN
 SCALE: 1:100



1ST, 2ND & 3RD FLOOR PLAN
 SCALE: 1:100

SCHEDULE OF DOORS & WINDOWS

TYPE	OPENING	SILL HEIGHT	UNTEL HEIGHT	REMARK	
D1	1050	2000	00	2000	ENTRY TO UNITS
D2	900	2000	00	2000	BEDROOMS
D3	750	2000	00	2000	TOILET
D4	1500	2000	00	2000	ENTRANCE LOBBY
DW1	750-900	2560	00	2560	BALCONY(BEDROOM)
DW2	750-1200	2560	00	2560	BALCONY(LIVING)
DW3	750-750	2560	00	2560	BALCONY(BEDROOM)
DW4	750-600	2560	1050	2560	BALCONY(KITCHEN)
W1	900	1660	900	2560	BEDROOM
V1	600	1000	1000	2000	TOILET
FCD	1500	2000	00	2000	STAIRCASE

PLOT DETAILS:
 ARCHITECTURAL DRAWINGS OF PROPOSED 5+13 STORIED APARTMENT BUILDINGS FOR AFFORDABLE HOUSING PROJECT OF M/S IABA HOUSING PVT. LTD. IN AEROTROPOLIS TOWNSHIP AT ANDAL, NEAR BURDIPUR, OVER L.R. PLOT NO:- 5650 (part), 5708 (part), 5710 (part), 5711 (part), 5712 (part), 5713 (part), 5714 (part), 5716 (part), 5718 (part), 5719 (part), 5720 (part), 5721 (part), 5722 (part), 5723 (part), 5724 (part), 5728 (part), 5729 (part), 5730 (part), 5731 (part), 5732 (part), 5733 (part), 5734 (part), 5735 (part), 5736 (part), 5737 (part), 5738 (part), 5739 (part), 5742 (part), 5743 (part), 5744 (part), 5745 (part), 5746 (part), 5747 (part), 5748 (part), 5749 (part), 5792 (part), 5793 (part), 5794 (part), 5820 (part), 5822 (part) & 5718/7748 (part) L.R. KHATAN NO:- 3893, J.L. NO:- 36, MOUZAL:- DAKSHINKHANDA, UNDER P.S:- ANDAL, DIST:- BURDWAN, WEST BENGAL.

GIAN P. MATHUR AND ASSOCIATES (P) LTD.
 C-35, East Of Kailash, New Delhi-110065
 T: +9199999 814699912 E: info@gpmindia.com I W: www.gpmindia.com
 ARCHITECT:

SERVICES CONSULTANT:
 Consumate Engineering Services (P) Ltd.
 Head Office: B-17, Sector-47, Noida-201 011
 Tel: 0120-2262601 (21 Lines)
 Lko. Office: R-006, Rattas Puri, Gazi Nagar, Lucknow
 Email: mail@consumate.com, website: www.consumate.com

SPECIFICATIONS:-
 1. GRADE OF CONCRETE FOR SUB STRUCTURE IN PILE & PILE CAP WILL BE M30 AND FOR SUPER STRUCTURE IN BEAMS & SLAB MS AND FOR SHEAR WALLS & COLUMNS AS PER COLUMN SCHEDULE DRAWINGS. AS PER IS:456:2000.
 2. P.C.C. WORK IN M-10 GRADE CONCRETE.
 3. REINFORCEMENT STEEL - Fe-500 CONFIRMING TO IS:1786-2008.
 4. MINIMUM COVER OF CONCRETE :
 (a) FOUNDATION = 50 mm.
 (b) COLUMN = 40 mm.
 (c) SHEAR WALL = 30 mm.
 (d) BEAM = 30 mm.
 (e) SLAB = 20 mm.

NOTES:-
 1. ALL DIMENSIONS ARE IN mm, CHAINAGE AND LEVELS ARE IN m. UNLESS OTHERWISE NOTED.
 2. ALL STRUCTURAL DRAWINGS BE READ IN CONJUNCTION WITH ARCHITECTURAL DRAWINGS.
 3. HEIGHT OF THE BUILDING IS 42.85 m.
 4. ALL EXTERNAL WALLS 230 MM THK. & ALL INTERNAL WALLS 115 MM THK.
 BRICK WORK IN BURNT CLAY BRICKS
 BRICK WORK IN FLUSH BRICKS
LEGEND
 5. INTERNAL ROAD IS 450 MM ABOVE FROM EXTERNAL ROAD.

CHECKED & VETTED
[Signature]
 DATE: 09/11/2022

IABA HOUSING PVT. LTD.
 CLIENT: 5 GORKY TERRACE, 2ND FLOOR, KOLKATA, WEST BENGAL-700017

SIGNATURE OF REVIEWER
[Signature]
 SANJIB GUHA
 STRUCTURAL CONSULTANT
 BSC, B.E., FIE, Chartered Engineer
 Structural Reviewer (K.W.C.)
 Empowered No.-EOR/1/2019
 Structural Reviewer (NCA)
 Empowered No.-STER/NDV18/00003

SIGNATURE OF STRUCTURAL ENGINEER
[Signature]
 CHANDI PRASAD KHANRA
 BE (Civil), ME (Struct), MIE (India)
 ESE-1/2

SIGNATURE OF GEOTECHNICAL ENGINEER
[Signature]
 RUPAK KUMAR BANERJEE
 B.C.E., M.E., MGS, M.I.E.,
 G. T/13 (K.M.C.), BM/GEOTECH-1002
 019/RP SO/12/14-15, GTE-HIDCO/08/00014
 GEOWBSIDC201900002

CONSULTANT/ARCHITECT'S SIGNATURE
[Signature]
 GIAN P. MATHUR
 ARCHITECT
 Arch., MCA, I.I.A.
 CA No. 875769

SIGNATURE OF LOCAL ARCHITECT'S SIGNATURE
[Signature]
 Jai Chatterjee
 ART. JAI CHATTERJEE, B-ARCH
 Registration No.: CA/2021/134352
 Ph: 9434649399, 785893411
 4/13, Suhatta Commercial Complex
 City Centre, Durgapur - 713218

SIGNATURE OF OWNER
[Signature]
 IABA HOUSING PVT. LTD.